



FLEYG®

Learn
more at
fleyg.ch/en

FLEYG® Highway

**Simple and safe
Solution for ramping
steel plates**

FLEYG AG

Bäumleingasse 22
4051 Basel / CH

fleyg.ch/en
info@fleyg.ch

Follow us



Scan QR-Code for
more Informations.

How does FLEYG® Highway work?

Steel plates are also indispensable on high-performance roads so that lorries, heavy goods vehicles and vehicles can bridge construction site obstacles.

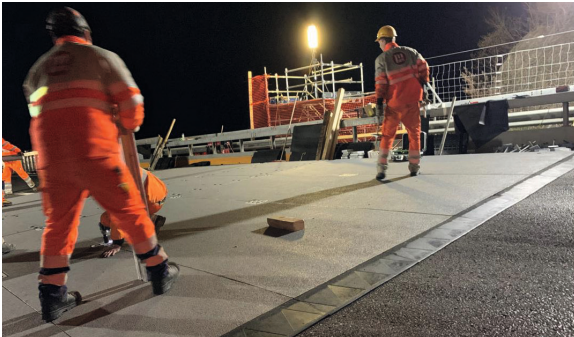
Up to now, steel plates have mostly been laid phalt ramps or have not been rammed at all. This is either time-consuming, dangerous or cost-intensive. In addition, the steel plates installed in this way cause considerable noise when crossing and strong impact forces act on the chassis of the vehicles.

The solution is FLEYG® Highway.

The majority of the FLEYG® Highway ramp is made of rubber. The noise dampening effect is already integrated into the material, The ramp cushions the impact of driving and makes it much more pleasant for all motorists.



Safe - Sustainable - Cost-effective.



| | FLEYG® Highway |
|-------------------|--|
| Material | Specially designed Recycled rubber with tensile/ compression inserts |
| Surface | Water repellent with pearl structure |
| Patent | FLEYG AG Bäumleingasse 22 4051 Basel |
| Technical Details | FLEYG® Highway 1000 x 800 x 35 mm / 19 kg |

Advantages of FLEYG® Highway



Simple and quick to Install



Reusable again and again



Cost reduction compared to ramps with paving



Withstands the highest loads

| | Asphalt pavement | FLEYG® Highway |
|-------------|--|--|
| Usability | Asphalt is only applicable once or not at all on high-performance roads | FLEYG® Highway can be used again and again, far more than 200 applications are possible. |
| Flexibility | Asphalt must be renewed and repaired again and again | FLEYG® Highway is quick and flexibly laid |
| Security | - Strong impacts during crossings - Not well visible for all Road users | - Minimised impacts during crossings - Increased safety for road users - Environmentally friendly - Easy to install |